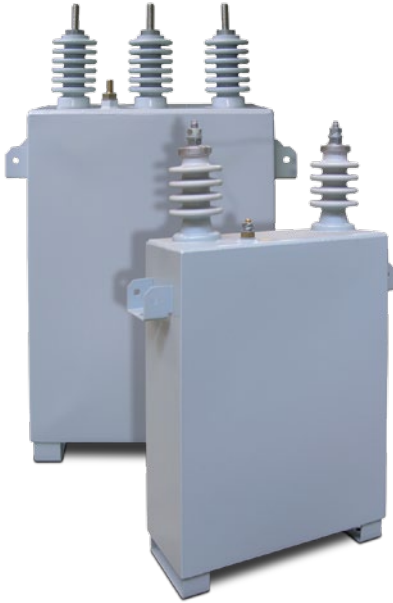


CHV-M

Single-phase capacitor (indoor and outdoor use)



Description

CHV medium-voltage capacitor, made up of different basic capacitive elements.

These basic units are connected in series and parallel with the purpose of obtaining the power at the necessary voltage.

All the elements are protected by an internal fuse. This fuse is disconnected if a fault is detected, isolating only the basic unit that has been damaged. Internal fuse protection ensures greater system safety and service continuity.

Application

CHV-M capacitors are used to build static and automatic MV capacitor banks.

We will vary the number of capacitors in parallel and/or in series depending on the power and voltage required. The stainless-steel box of the **CHV** capacitor makes it a versatile product that can be used in indoor and outdoor applications.

Technical features

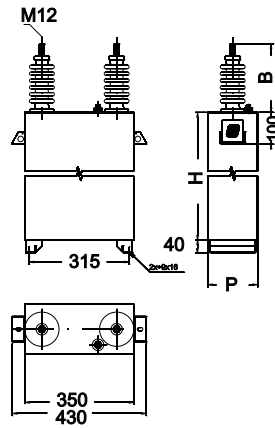
Electrical features	Voltage	1...20 kV
	Nominal power	25...750 kvar
	Frequency	50 or 60 Hz
	Dielectric losses	≤ 0.15 W / kvar
	Capacity tolerance	-5%...+10%
	Location	Indoor / Outdoor
	Protection	Internal fuse (depending on the type)
Discharge resistance (in compliance with IEC 60871-1)	Location	Interior
	Discharge time	≤ 10 minutes *
	Residual voltage	≤ 75 V *
Insulators	Material	Porcelain
	Pollution level	16 mm / kV (other leakage lines, on demand)
	Insulation level	12 - 17.5 - 24 - 36 kV (see table 1)
Overload	In current	1.3 I_n permanent
	In voltage	1.1 U_n 12 h in 24 hours
		1.15 U_n 30 min in 24 hours
		1.2 U_n 5 min in 24 hours
1.30 U_n 1 min in 24 hours		
Environmental conditions	Operating temperature	Category C (in accordance with IEC 60871-1)
	Maximum temperature (*2)	50 °C
	Mean maximum value over 24 hours	40 °C
	Mean maximum value over 1 year	30 °C
Build features	Dielectric	Rough polypropylene film
	Electrode	Laser-cut aluminium sheet
	Saturant oil	SAS-40E or M/DBT (PCB-free)
	Dimensions (mm)	depending on the type
	Weight	depending on the type (see table)
	Box	Painted stainless steel, RAL 7035 Features two flanges for attaching to the frame and avoiding mechanical efforts on the porcelain terminals
	Assembly position	Horizontal or vertical
	Pressure switch	Optional
	Standards	IEC 60871-1, IEC 60871-4

(*) Please ask for other features or configurations (*2) This is assumed to be an isolated case

CHV-M

Single-phase capacitor (indoor and outdoor use)

References



(*) No internal fuses. Other power ratings, please ask

BIL 28/75 kV (50 Hz) - 6.35 kV				
Type	Code	kvar	Weight	Dimensions (mm) width x height x depth.
CHV-M 50/6.35*	R8B0500006350	50	17.9 kg	350 x 487 x 160
CHV-M 75/6.35*	R8B0750006350	75	21.8 kg	350 x 537 x 160
CHV-M 100/6.35	R8B1000006350	100	21.8 kg	350 x 537 x 160
CHV-M 121/6.35	R8B1210006350	121	25.2 kg	350 x 587 x 160
CHV-M 133/6.35	R8B1330006350	133	25.4 kg	350 x 587 x 160
CHV-M 150/6.35	R8B1500006350	150	28.6 kg	350 x 637 x 160
CHV-M 167/6.35	R8B1670006350	167	29.1 kg	350 x 637 x 160
CHV-M 200/6.35	R8B2000006350	200	33.2 kg	350 x 697 x 160
CHV-M 242/6.35	R8B2420006350	242	37.6 kg	350 x 757 x 160
CHV-M 250/6.35	R8B2500006350	250	37.8 kg	350 x 757 x 160
CHV-M 300/6.35	R8B3000006350	300	45.3 kg	350 x 867 x 160
CHV-M 363/6.35	R8B3630006350	363	49.4 kg	350 x 857 x 175
CHV-M 400/6.35	R8B4000006350	400	54.5 kg	350 x 927 x 175
CHV-M 484/6.35	R8B4840006350	484	62.7 kg	350 x 1027 x 175
CHV-M 500/6.35	R8B5000006350	500	65.6 kg	350 x 1067 x 175
CHV-M 600/6.35	R8B6000006350	600	79.2 kg	350 x 1247 x 175
CHV-M 750/6.35	R8B7500006350	750	90.4 kg	350 x 1217 x 200
BIL 50/125 kV (50 Hz) - 12.7 kV				
Type	Code	kvar	Weight	Dimensions (mm) width x height x depth.
CHV-M 50/12.7*	R8D0500012700	50	19.7 kg	350 x 615 x 160
CHV-M 75/12.7*	R8D0750012700	75	23.4 kg	350 x 665 x 160
CHV-M 100/12.7*	R8D1000012700	100	26.8 kg	350 x 715 x 160
CHV-M 121/12.7*	R8D1210012700	121	27.3 kg	350 x 715 x 160
CHV-M 133/12.7*	R8D1330012700	133	30.5 kg	350 x 765 x 160
CHV-M 150/12.7*	R8D1500012700	150	31.2 kg	350 x 765 x 160
CHV-M 167/12.7*	R8D1670012700	167	35.1 kg	350 x 825 x 160
CHV-M 200/12.7	R8D2000012700	200	39.2 kg	350 x 885 x 160
CHV-M 242/12.7	R8D2420012700	242	46.9 kg	350 x 995 x 160
CHV-M 250/12.7	R8D2500012700	250	47.0 kg	350 x 995 x 160
CHV-M 300/12.7	R8D3000012700	300	48.1 kg	350 x 995 x 160
CHV-M 363/12.7	R8D3630012700	363	56.9 kg	350 x 1055 x 175
CHV-M 400/12.7	R8D4000012700	400	59.6 kg	350 x 1085 x 175
CHV-M 484/12.7	R8D4840012700	484	68.7 kg	350 x 1195 x 175
CHV-M 500/12.7	R8D5000012700	500	70.9 kg	350 x 1225 x 175
CHV-M 600/12.7	R8D6000012700	600	83.0 kg	350 x 1375 x 175
CHV-M 750/12.7	R8D7500012700	750	98.8 kg	350 x 1405 x 200

BIL 20/60 kV (50 Hz) - 3.81 kV				
Type	Code	kvar	Weight	Dimensions (mm) width x height x depth.
CHV-M 50/3.81	R8A0500003810	50	18.2 kg	350 x 487 x 160
CHV-M 75/3.81	R8A0750003810	75	18.5 kg	350 x 487 x 160
CHV-M 100/3.81	R8A1000003810	100	21.9 kg	350 x 537 x 160
CHV-M 121/3.81	R8A1210003810	121	25.4 kg	350 x 587 x 160
CHV-M 133/3.81	R8A1330003810	133	25.5 kg	350 x 587 x 160
CHV-M 150/3.81	R8A1500003810	150	29.1 kg	350 x 637 x 160
CHV-M 167/3.81	R8A1670003810	167	29.3 kg	350 x 637 x 160
CHV-M 200/3.81	R8A2000003810	200	33.5 kg	350 x 697 x 160
CHV-M 242/3.81	R8A2420003810	242	38.0 kg	350 x 757 x 160
CHV-M 250/3.81	R8A2500003810	250	44.8 kg	350 x 867 x 160
CHV-M 300/3.81	R8A3000003810	300	45.8 kg	350 x 867 x 160
CHV-M 363/3.81	R8A3630003810	363	52.3 kg	350 x 957 x 160
CHV-M 400/3.81	R8A4000003810	400	55.3 kg	350 x 927 x 175
CHV-M 484/3.81	R8A4840003810	484	66.1 kg	350 x 1067 x 175
CHV-M 500/3.81	R8A5000003810	500	68.3 kg	350 x 1097 x 175
CHV-M 600/3.81	R8A6000003810	600	80.2 kg	350 x 1247 x 175
CHV-M 750/3.81	--	--	--	--
BIL 38/95 kV (50 Hz) - 9.53 kV				
Type	Code	kvar	Weight	Dimensions (mm) width x height x depth.
CHV-M 50/9.53 *	R8C0500009530	50	19.5 kg	350 x 530 x 160
CHV-M 75/9.53 *	R8C0750009530	75	20.2 kg	350 x 530 x 160
CHV-M 100/9.53 *	R8C1000009530	100	23.6 kg	350 x 580 x 160
CHV-M 121/9.53 *	R8C1210009530	121	27.1 kg	350 x 630 x 160
CHV-M 133/9.53 *	R8C1330009530	133	30.4 kg	350 x 680 x 160
CHV-M 150/9.53	R8C1500009530	150	31.0 kg	350 x 680 x 160
CHV-M 167/9.53	R8C1670009530	167	34.9 kg	350 x 740 x 160
CHV-M 200/9.53	R8C2000009530	200	35.4 kg	350 x 740 x 160
CHV-M 242/9.53	R8C2420009530	242	46.8 kg	350 x 910 x 160
CHV-M 250/9.53	R8C2500009530	250	46.9 kg	350 x 910 x 160
CHV-M 300/9.53	R8C3000009530	300	48.0 kg	350 x 910 x 160
CHV-M 363/9.53	R8C3630009530	363	54.7 kg	350 x 1000 x 160
CHV-M 400/9.53	R8C4000009530	400	59.7 kg	350 x 1000 x 175
CHV-M 484/9.53	R8C4840009530	484	68.7 kg	350 x 1110 x 175
CHV-M 500/9.53	R8C5000009530	500	71.0 kg	350 x 1140 x 175
CHV-M 600/9.53	R8C6000009530	600	83.1 kg	350 x 1290 x 175
CHV-M 750/9.53	R8C7500009530	750	90.4 kg	350 x 1257 x 200
BIL 70/170 kV (50 Hz) - 19.05 kV				
Type	Code	kvar	Weight	Dimensions (mm) width x height x depth.
CHV-M 50/19.05 *	R8E0500019050	50	23.3 kg	350 x 644 x 160
CHV-M 75/19.05 *	R8E0750019050	75	23.6 kg	350 x 644 x 160
CHV-M 100/19.05 *	R8E1000019050	100	27.0 kg	350 x 694 x 160
CHV-M 121/19.05 *	R8E1210019050	121	30.5 kg	350 x 744 x 160
CHV-M 133/19.05 *	R8E1330019050	133	30.7 kg	350 x 744 x 160
CHV-M 150/19.05 *	R8E1500019050	150	35.0 kg	350 x 804 x 160
CHV-M 167/19.05 *	R8E1670019050	167	35.3 kg	350 x 804 x 160
CHV-M 200/19.05 *	R8E2000019050	200	39.4 kg	350 x 864 x 160
CHV-M 242/19.05*	R8E2420019050	242	47.1 kg	350 x 974 x 160
CHV-M 250/19.05	R8E2500019050	250	50.8 kg	350 x 964 x 175
CHV-M 300/19.05	R8E3000019050	300	56.5 kg	350 x 1034 x 175
CHV-M 363/19.05	R8E3630019050	363	57.1 kg	350 x 1034 x 175
CHV-M 400/19.05	R8E4000019050	400	64.4 kg	350 x 1134 x 175
CHV-M 484/19.05	R8E4840019050	484	70.8 kg	350 x 1204 x 175
CHV-M 500/19.05	R8E5000019050	500	73.7 kg	350 x 1244 x 175
CHV-M 600/19.05	R8E6000019050	600	84.1 kg	350 x 1264 x 200
CHV-M 750/19.05	R8E7500019050	750	104.2 kg	350 x 1454 x 200